

13-14款起亚索兰托下吸电尾门安装说明

AS安装说明 2023-05-18 16:33 发表于广东

The Installation Of Electric Tailgate

注意事项Matters Needing Attention

本说明书中的所有图片仅供参考，图片与实物有可能不同，但安装方法是一样的。

为方便您安装，请在安装前认真阅读该商品使用说明书；安装时需注意保护好您爱车的表面，避免刮花。

请定期检查与车连接的所有配件是否松动，以确保使用安全。

All the pictures in this manual are for reference only. The pictures may differ from the actual ones, but the installation method is the same.

For your convenience, please read the instruction manual of the product carefully before installation. Please pay attention to protect the surface of your car and avoid scratching.

Please check regularly that all accessories connected to the car are tight to ensure safe use.

常见问题点Common Issues

1. 支架安装反：门关不好；
 2. 支架螺丝没有按要求更换：门关不好，损坏杆；
 3. 控制盒接插件没有插到位，松脱：开关门没有力或者防架力重；
 4. 杆球头、卡簧没有安装到位：使用过程中造成杆脱落（安装后检查）；
 5. 接插件没有插到位、脱落：功能失效；
 6. 电吸锁架偏离中心：门关不上、门缝隙大、拉力紧导致开门大声；
 7. 新车安装长时间没启动汽车造成电量小：开关门不正常，需重新打火；
 8. 尾门加装隔音棉5公斤以上可能影响开关门力，需控制器加力；
 9. 首次安装或者断电后需要学习：长按加装尾门关门键3-5秒听到“嘀”一声长响，把手松开再按门下来听到“嘀”的一声，学习成功（没有学习会出现开关门不正常）；
 10. 球头不对时，非线端的球头可360度旋转。
1. Bracket installation reverse: trunk door does not close properly.
 2. The bracket screw is not replaced as required: the door does not close properly, will damage electric poles.
 3. The ECU control box is not plugged in properly, loose: there is no force when opening or closing the door or the anti-pinch force is heavy.
 4. Pole ball head, the circlip is not installed properly: the poles detach during use (check after installation).
 5. The connector is not plugged in properly, it falls off: the function fails.
 6. The electric suction lock is off center: the door cannot close, the door gap is large, and the tension is tight, which causes the door to open loudly.
 7. Installed in a new car for a long time without restarting the car, resulting in low power: door opening or closing not functioning normally, need to restart the car.
 8. Adding more than 5 kg of soundproof cotton to the tailgate may affect the opening or closing door force, add power to ECU control box.
 9. After the first installation or power failure, need to learn: long press the tailgate closing button for 3-5 seconds to hear a long sound of "di", release the handle and press the door down to hear a sound of "di", learning success (no learning will appear abnormal opening and closing)
 10. When the ball head is wrong, the non-aligned ball head can be rotated 360 degrees.



合格的球头卡簧 Qualified ball head circlip

1.球头卡簧已经张开了，撑杆安装后会脱杆的风险，需要修复后才能安装。

The ball circlip has been opened, there is risk of electric pole detaching after installation. It needs to be repaired before installation.

2.合格的卡簧。不合格的卡簧。

Passed QC circlip. Not passed QC circlip.

3.卡簧的修复安装方式，卡簧在球头外端的缺口卡入。

The repair and installation method of the circlip, the circlip is stuck in the notch at the outer end of the ball head.

4.合格的撑杆安装（卡簧贴紧球头）。

Correct electric pole mounting (the circlip tightly mounted in the ball head).

5.不合格的安装，开簧弹起来了，有脱杆的风险，需要及时修复。

Incorrect installation, the spring is sprung up, there is a risk of disengagement, and it needs to be repaired in a timely manner.

6.不合格的球头安装方式（卡簧没有贴紧球头）有脱杆的风险，需马上修复。

Incorrect ball head installation (the circlip does not stick to the ball head) has the risk of being disengaged and needs to be repaired immediately.

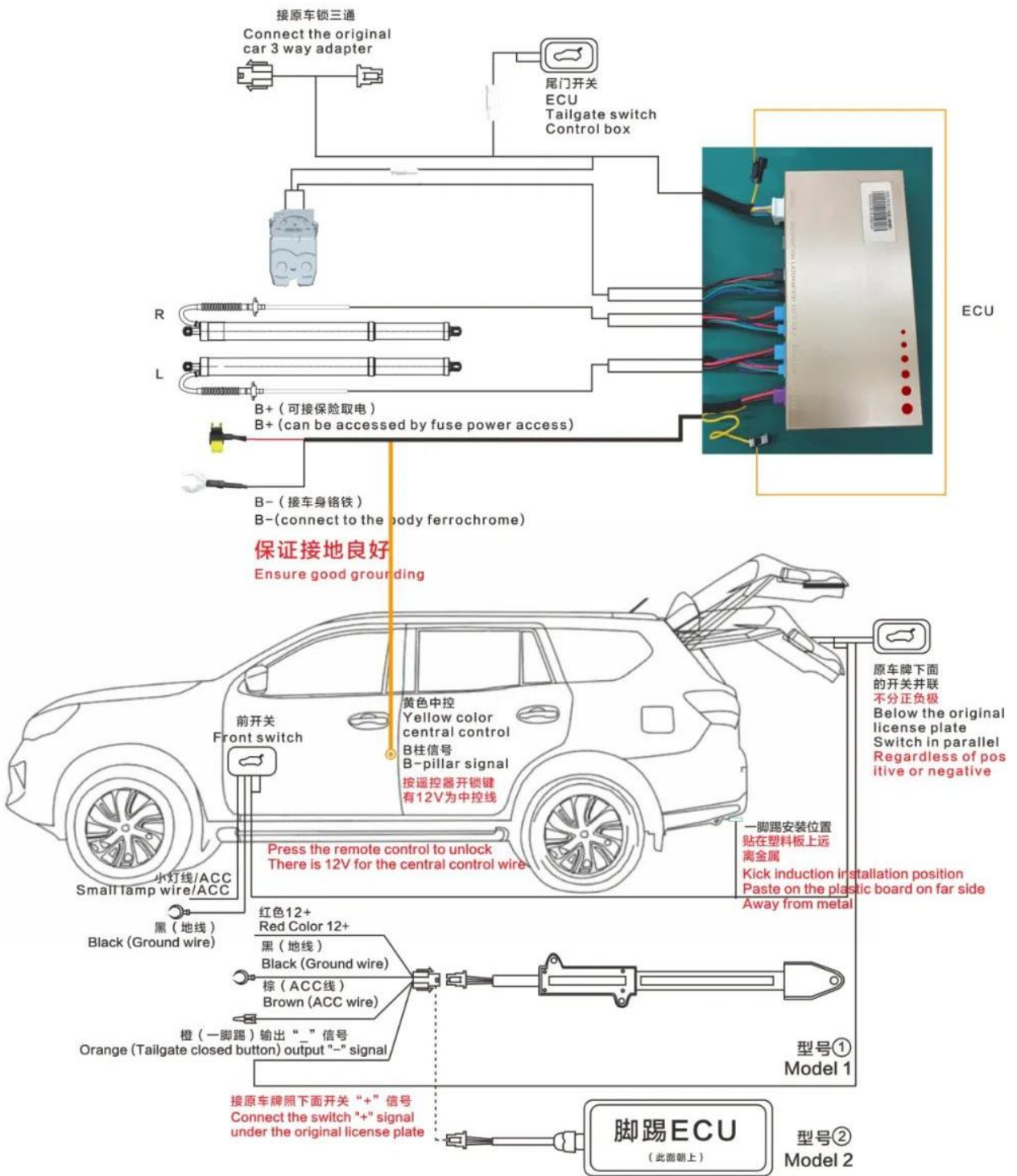
安装步骤 Installation Procedure

参考配件清单和配件图检查配件是否齐全。汽车尾门安装完成后，请按尾门加装开关按键不放手，3-5秒出现“嘀”一声长响，把手松开，再按一下尾门关上，出现“嘀嘀”两声，即尾门学习完成

Refer to the spare parts list and spare parts drawing to check whether the spare parts are complete. After the installation of the car's tailgate, please press the button to install the switch on the tailgate without letting go. There will be a long "beep" in 3-5 seconds. Release the handle, and then press the tailgate to close. There will be two "beeps", that is, the programming of the tailgate is completed

电动尾门接线图

Electric Tailgate Wiring Diagram





替换原车上支架用原车螺丝固定Replace the original car upper bracket and fix it with the original car screws



替换原车下支架用原车螺丝固定，安装我司电动撑杆Replace the lower bracket of the original car and fix it with the original car screws, and install our electric strut



撑杆线从上图原车孔进入The strut line enters from the original car hole in the above picture

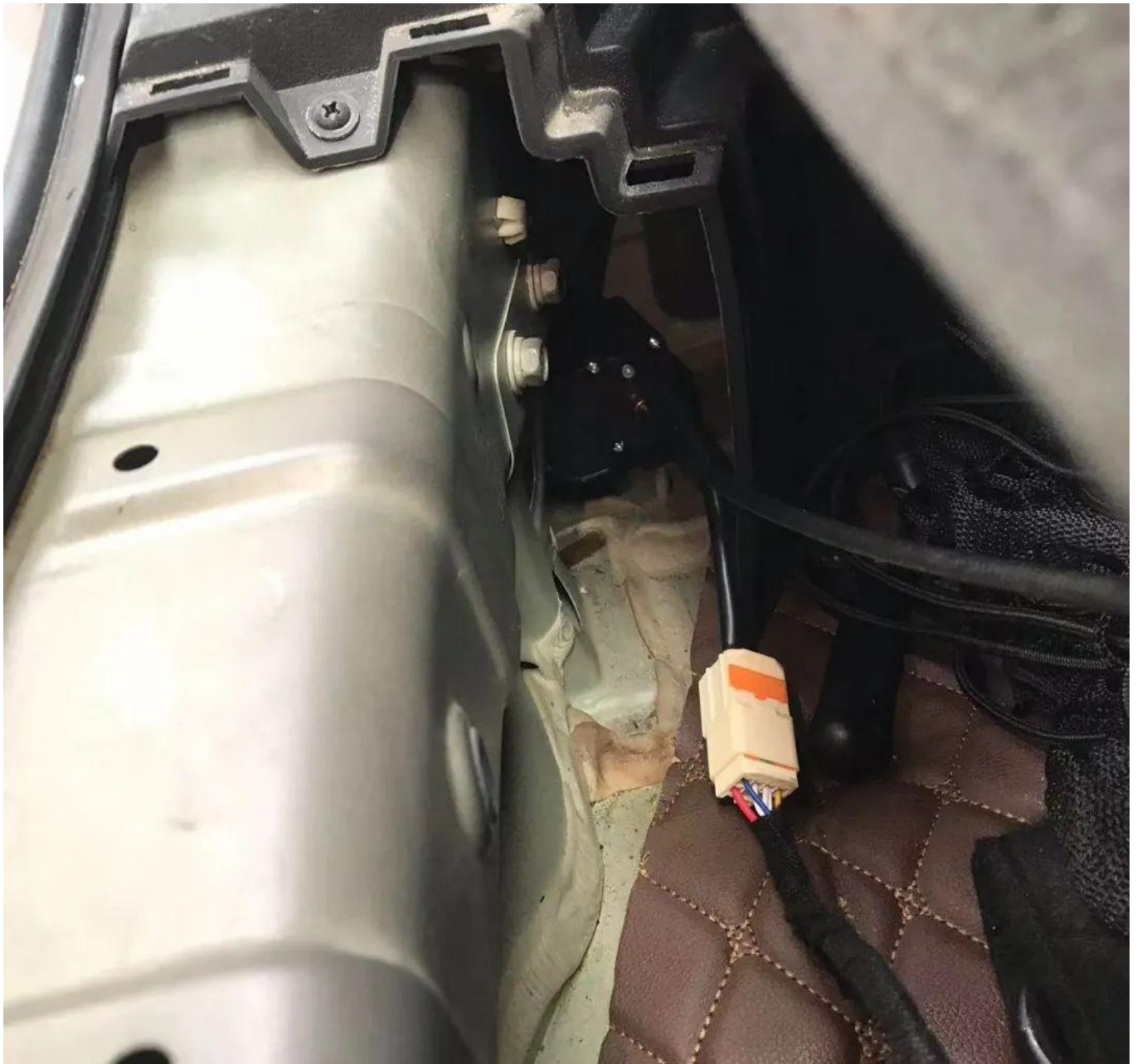


然后撑杆线从上图原车孔穿出Then the strut line passes through the original car hole in the above picture

电源线和前开关线从上图波纹管走线到尾门门板内The power cable and the front switch cable are routed from the bellows in the above figure to the inside of the tailgate door panel



替换原车锁扣安装我司下电吸 Replace the original car lock and install our electric suction



电吸电机插头对插Electric suction motor plug

Electric suction motor plug



左侧B柱波纹管处：尾门黄色中控线接原车绿色线
At the bellows of the left B-pillar: the yellow central control line of the tailgate is connected to the green line of the original car



拔掉原车锁头插座与上图三通插座转插 Unplug the original car lock socket and switch to the three-way socket in the above picture



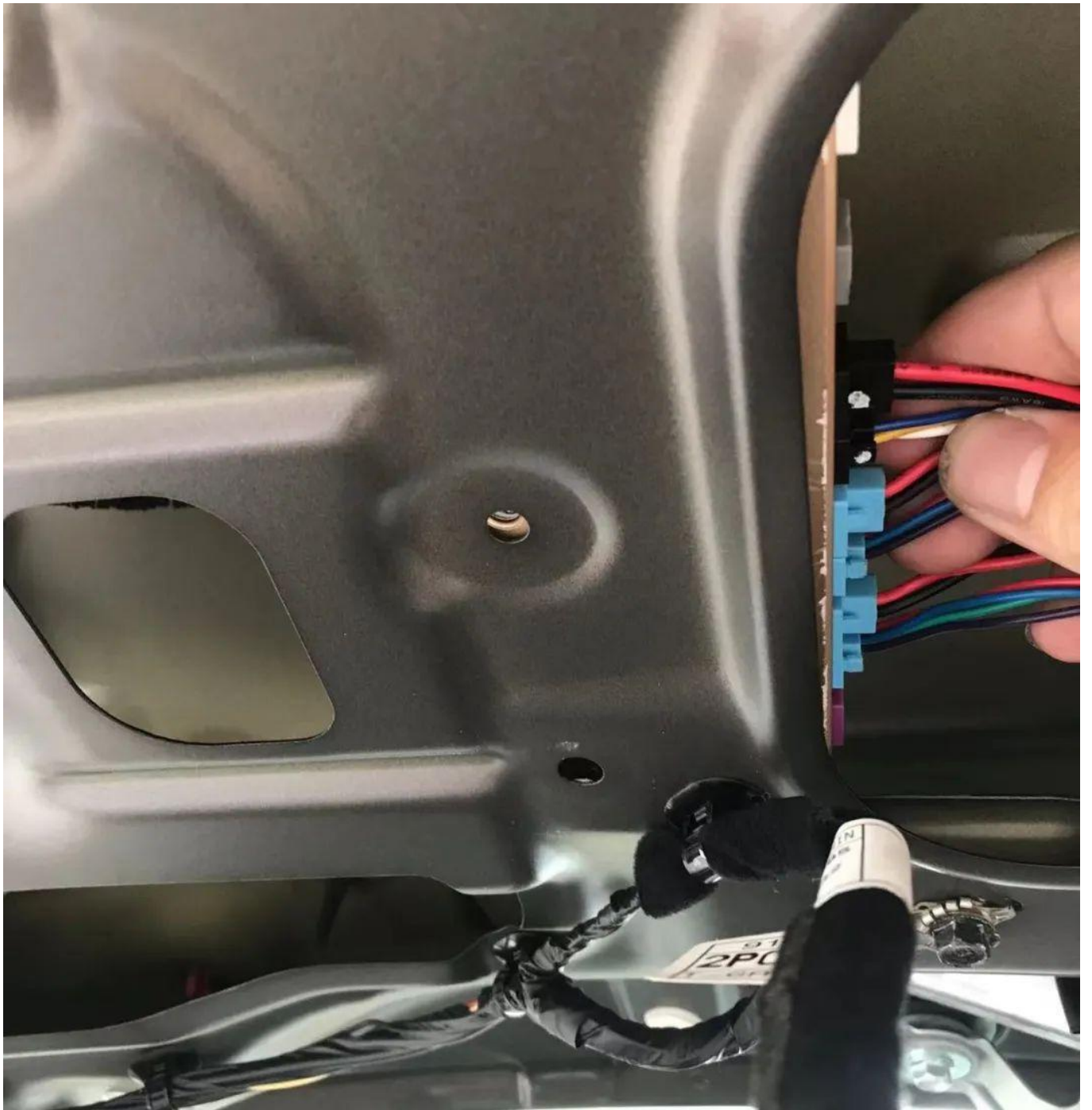
主驾电箱位置取电12v The position of the main driving electric box takes power 12v



车尾尾门内部接地Internal grounding of rear tailgate



上图标示位置打孔安装尾门开关按键 Drill holes to install the tailgate switch button at the position indicated in the above figure



控制盒用螺丝固定在汽车尾部尾门里面The control box is fixed in the rear tailgate of the car with screws

视频说明video description

在安装完成后请务必进行尾门学习设置，请确保门能开关到位（将尾门升至理想高度，按尾门加装开关按键，3-5秒听到“嘀”一声长响，把手松开，再按一下尾门按键关门，尾门关到位，然后听到“嘀”一声，即尾门学习完成）

After the installation is completed, the tailgate programming setting must be carried out. Please make sure that the door can be opened and closed in place (raise the tailgate to the desired height, press the button for adding the switch on the tailgate, there's a long "beep" for 3-5 seconds, release the button, press the button for closing the tailgate again, the tailgate is closed in place, and then hear a "beep", that is, the tailgate programming is completed)

免责声明Disclaimer

由于安装及使用不当而引发的相关问题及损失，不在我公司的质保范围内。在使用前请仔细阅读本手册，阅后请小心收藏，以备自后才查阅，图片仅供参考，产品以实物为准。

The related problems and losses caused by improper installation and use are not covered by our company's warranty. Please read this manual carefully before use. Please store carefully after reading, so that you can check it later. The picture is for reference only. The product is subject to the actual object.

按键操控方式Button control mode

1: 原车遥控按三次解锁键开关尾门

Long press the front button for three seconds to switch the tailgate

2: 前按键长按三秒开关尾门

The original vehicle remote control press the unlock key three times to open the tailgate
设置高度Height Setting

将尾门升至理想高度，按尾门加装开关按键，3-5秒出现“嘀”一声长响，把手松开，再按一下尾门按键下关，尾门关到位，然后出现“嘀”一声，即尾门学习完成

Raise the tailgate to the desired height, press the tailgate switch button, 3-5 seconds will appear a "beep" sound, loosen hand, then press the tailgate button to close, the tailgate is closed, and there is a "beep" sound, that is, the tailgate programming is completed

电动尾门故障解决方案 Solution to Electric Tailgate Failure

故障现象 Fault Phenomenon	故障排除 Troubleshooting
原车遥控没作用	黄色中控线是否接好

The original car remote control did not work	Whether the yellow center wire connected properly
<p>安装完成后不工作 Does not work after installation is complete</p>	<p>检查正电源是否接好12V-16V 检查电源线保险丝是否插好 检查地线是否接好 Check if the positive power supply is connected to 12V-16V Check if the power cord fuse is plugged in. Check if the ground wire is connected</p>
<p>关尾门关不到位 Tailgate do not close properly</p>	<p>撑杆左右支架是否装反 盒子线材是否插好 支架固定是否更换成我司专用螺丝 原车尾门上盖左右有两个黑胶，是否松脱，需拧紧 Whether the left and right brackets of the poles are reversed Whether the control box cables plugged in properly Whether the bracket is fixed or replaced with our special screw There are two vinyls on the left and right sides of the original tailgate. If it is loose, it needs to be tightened.</p>
<p>原车遥控器不能关门 The original car remote cannot close the door</p>	<p>装车后是否有学习，第一次装好车需要关门按键学习一次学习步骤；打开车门长按关尾门键三秒，听到嘀的一声响，松开手重按一下此键，尾门会自动关上，学习完成。 Whether there is any programming after installation. The first time you install on the car, you need to program by using the tailgate button once. Programming steps; open the door and press and hold the tailgate button for three seconds. When you hear a click, release the hand and press the button again. The tailgate will automatically close and programming is complete.</p>
<p>尾门开到一半上不去 The tailgate does not go up halfway</p>	<p>撑杆左右支架是否装反 盒子线材是否插好 支架固定是否更换成我司专用螺丝 Whether the left and right brackets of the poles are reversed Whether the control box cables is plugged in properly Whether the bracket is fixed or replaced with our special screw</p>

阅读 16

分享 收藏

赞 在看

分享此内容的人还喜欢

同样92、95号汽油，为什么私营加油站就比较便宜？难道品质也一样？

阅车知识



本田的未来从解散本田中国开始？

阅读1万+ TMC动力



【专家资料更新】零跑C01 C11维修手册电路图册2023更新
聚匠修车

